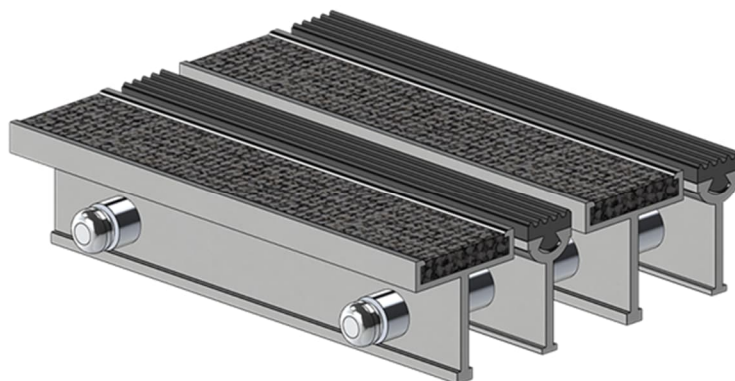


BCH-4 MODEL

EASY TO MAINTAIN AND ECONOMICAL



SPECIFICATIONS AND TECHNICAL DATA

Dimensions:

Carpet insert

35 mm x 3 mm x 38 mm

(1 5/16" x 1/8" x 1 1/2")

Rectilinear vinyl insert

17 mm x 3 mm x 3 8mm

(11/16" x 1/8" x 1 1/2")

Recommended for the following building types:

Institutional, industrial and commercial, foot traffic only.

The aluminum foot grille blades come with a carpet insert followed by a rectangular vinyl insert. The carpet and vinyl inserts are inserted so as to be interchangeable and are designed to be both esthetically pleasing and efficient. The bands are locked at each end for safety.

FRICTION COEFFICIENT	1,21 (DYNAMIC AND STATIC)
CLEANING EFFICIENCY	71,00%
DEFLECTION UNDER LIVE SPAN LOAD – 610 MM (2'0")	810,00 mm (2'8")
1000,00 NEWTON (NM) ÷ 4,448 = IMP	1000,00 NEWTON (NM) ÷ 4,448 = IMP
DEFLECTION UNDER LATERAL LOAD	8,00 (VISUAL 1 to 20)
DEFLECTION UNDER RESIDUAL LOAD	17,50 mm
PLASTIC ENERGETIC DEFFICIENCY	84,10 NEWTON (Nm)
SALT FOG	1000,00 hrs (ASTM B117)
OPENING PERCENTAGE	18,00%
ALLUMINUM ALLOY	6061-T6
VINYL DUROMETER	90,00

BCH-4 Foot grilles:

To supply and install to location and sizes Bolar foot grilles manufactured **under a proven quality system** model **BCH-4**

As manufactured by:

Grillage Bolar Canada Inc.
50 Omer-Deserres
Blainville, Québec
J7C 5H2

Tel: 450-435-7385 OR 1-800-552-6527
Fax: 450-435-3600 OR 1-800-667-3660

Website : www.bolar.com
E-Mail: sales@bolar.com

All aluminum components shall be extruded aluminum alloy 6061-T6

Deflection under live load:

The foot grilles shall be so conceived so as to accept a minimum uniform load of 4260 Newton applied over a 4-inch square (100mm) in order to obtain a 1/180" deflection over a 3'-6" (1067 mm) span.

The perimeter frames shall be in aluminum like an inverted "T" shape such as model "VV" by Bolar, in order to anchor the structure into the concrete supplied with sound gasket. For sections larger than 6'-0" X 8'-0" (1828mm x 2438mm) a mechanical joint is to be provided (if specified).

OR

The perimeter frames shall be in aluminum like "L" shaped such as model "AD" by Bolar, for existing openings supplied with sound gasket. For sections larger than 6'-0" X 8'-0" (1828mm X 2438mm) a mechanical joint is to be provided (if specified).

OR

The perimeter frames shall be in aluminum like "Z" shaped such as model "TT" by Bolar for installation over finished floor surfaces supplied with sound gasket. For sections larger than 6'-0" X 8'-0" (1828mm X 2438mm) a mechanical joint is to be provided (if specified). A silicone joint is to be applied between the frame and the finished floor to prevent any water infiltration (by others).

Blades shall be "T" shaped size 1 5/16" X 1/8" X 1 1/2" (35mm X 3mm X 38mm) with a carpet insertion locked at each end. Overall depth from finished floor surface 2 1/2" (65mm). Combined with "Y" shaped blades size 11/16" X 1/8" X 1 1/2" (19mm X 3mm X 38mm) with an anti-slip polymer C9065 insert of Durometer 90/65, 1/4" (6.4mm) thick locked in at each end. Spacing between blades is not to exceed 3/16" (4.7mm) such as model BCH-4 by Bolar. Color based on the range of the manufacturer.

Spacing between blades and retaining rods shall be so as to meet manufacturer's specifications for the minimum weight capacity. Foot grille will be manufactured in sections so as to increase ease of maintenance.

The frames will be supplied with a pan. Pan shall be of 22-gauge stainless steel, no drain.

OR

The frames will be supplied with a pan. Pan shall be of 22-gauge galvanized steel. Coat all surfaces in contact with masonry with two coats of bituminous paint.

OR

The frames will be supplied without a pan. A coat of waterproofing is to be applied to the concrete base to avoid water infiltration (by others).

The sections shall have a friction coefficient of 1,21 and a cleaning efficiency of 71 %, percentage of opening shall be 18 %.

50, Omer-Deserres, Blainville Qc. J7C 5H2

P. 450.435.7385 **TF.** 1.800.552.6527 **F.** 450.435.3600

BOLAR.COM

commercial
institutional
industrial
residential

The deformation under lateral charge is not to exceed 8 (visual) after application of a maximal charge of 4260 Newton at a 45-degree angle in relation to the surface.

All sections shall be in accordance with ASTM B117 norms and be able to sustain a 1000 hour salt fog without any notable changes.

Manufacturer shall be able to confirm this data and be able to supply architect with all necessary reports and shop drawings.

Installation:

The foot-grille sections will be installed in their frames, as a last item, to prevent damages during construction. Install all foot grilles, square and level with finished floor so as to permit easy manipulation of all sections. All frame members and intermediary supports are to be level and well supported on all their lengths in order to avoid any deflection over a long-term period.

All frames and pans are to be thoroughly cleaned before installing any grille section in order for them not to exceed finished floor level. All sound gaskets damaged during installation, are to be replaced before final inspection. Protect grilles from construction traffic. Install all hinges (if required). Verify that all latches are in a closed position and properly greased (if required).

ACCESSORIES/OPTIONS

Option #1: Hinges and lock notch: (not available on this model) if no pan level base

Option #2: Hinges and lock notch with GB-46 lock downs: (not available on this model) if no pan level base

Option #3: Lock downs GB-46 (4 per grilles): (not available on this model) if no pan level base

All sections of grille will be supplied with a lock downs mechanism GB-46 (4 per sections of grille). The lock downs will be fabricated of galvanized steel and Teflon, they will be attached to the grille sections by the manufacturer. The lock downs will be supplied with a special key for ease of operation (one per vestibule). All lock downs must be greased (BSRS 2000 water resistant) at the time of installation by the general contractor. We suggest they be greased at least 4 times a year. All systems are to be verified by the architect prior to final approbation.

Option #4 Plates and Screws:

Install by the supplier on each corner of the grilles, they must be fixed by the general contractor with the screws provided by the manufacturer and will have to be verify by the Architect before final approbation. The plates and screws will come with an adapted screwdriver to ensure a good use (1 per vestibule). All plates and screws need to be greased with (BSRS 2000 grease waterproof) when the contractor is ready to do the final installation for the foot grille. We suggest that the screws and the holes are greased at least 4 times a year. Verify by the Architect that everything is exact before the final approbation.

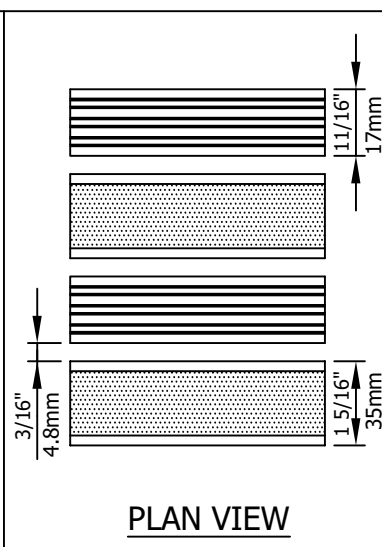
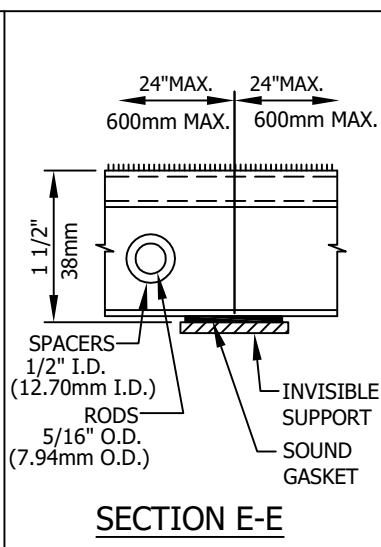
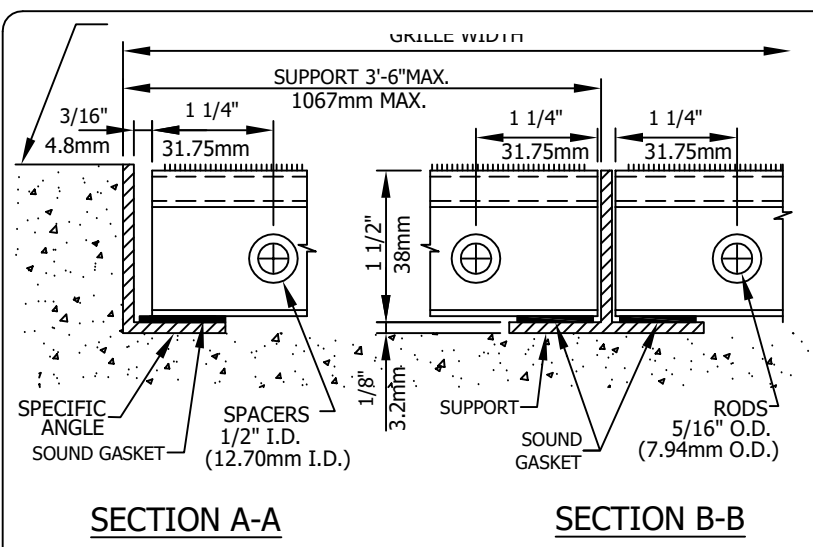
Option #5: Lifting hooks:

All grilles will be supplied with lifting hooks in order to provide easy lifting of sections without efforts or risk of damaging the grille surfaces (one per vestibule).

NOTE: They will not be incorporated to each section to minimize unauthorized manipulations of grilles, and thus prevent possible accidents.

Option #6: Sound gasket:

All frame sections will be supplied with a sound gasket, as per manufacturer's specifications. The sound gasket's function will be to buffer noise and vibrations that could occur between frames and blades.



LEVEL BASE INSTALLATION

GRILLE: BCH-4

FRAME: A D

MATERIAL AND ALLOY:

6061-T6 ALUMINIUM	<input type="checkbox"/>
STAINLESS STEEL 304	<input type="checkbox"/>
STAINLESS STEEL 316	<input type="checkbox"/>

GRILLE:

ALUMINIUM	<input type="checkbox"/>
STAINLESS STEEL	<input type="checkbox"/>

FRAME:

ALUMINIUM	<input type="checkbox"/>
STAINLESS STEEL	<input type="checkbox"/>

WITHOUT PAN: ☐

WITH PAN:

GALVANIZED	<input type="checkbox"/>
STAINLESS STEEL	<input type="checkbox"/>
ALUMINIUM	<input type="checkbox"/>

GAGE:

OVERALL DEPTH:

GRILLE / FRAME	PIT	<input type="text" value="1 5/8\"/>
	PAN	<input type="text"/>

REVISION:

REVISION DATE:

CONTRACTOR:

ARCHITECTS:

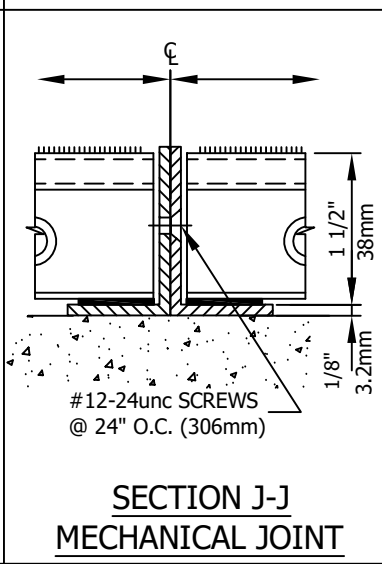
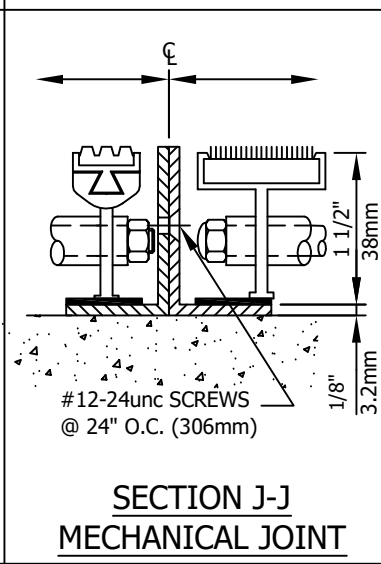
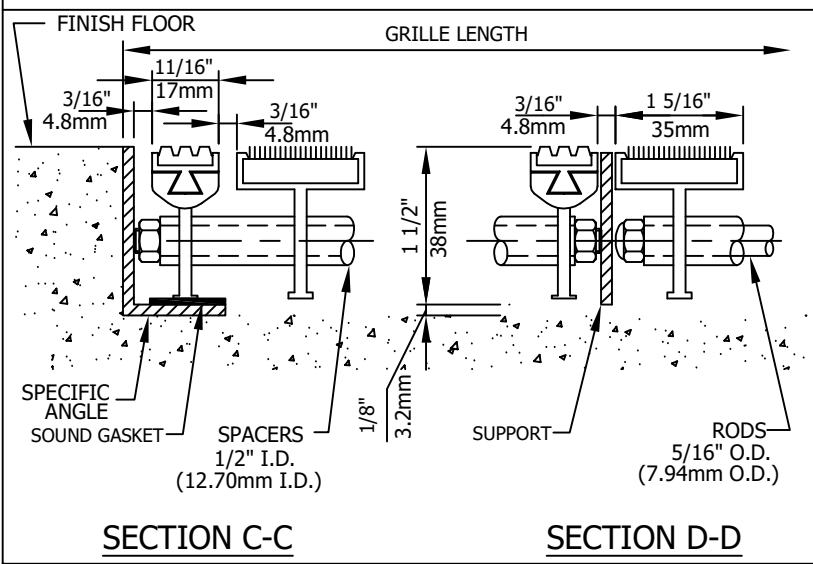
DISTRIBUTOR:

BOLAR BLAINVILLE, QUEBEC

http://www.bolar.com TEL: (450) 435 7385

sales@bolar.com FAX: (450) 435 3600

PROJECT:



OPTION:

#1	<input type="checkbox"/>
#2	<input type="checkbox"/>
#3	<input type="checkbox"/>
#4	<input type="checkbox"/>
#5	<input type="checkbox"/>

SEE DWG Nb:

PILELESS CARPET

COLOR:

VINYL COLOR:

BLACK:	<input type="checkbox"/>	LIGHT BLUE:	<input type="checkbox"/>
GREY:	<input type="checkbox"/>	BURGUNDY:	<input type="checkbox"/>
BROWN:	<input type="checkbox"/>	KHAKI (GREEN):	<input type="checkbox"/>
BEIGE:	<input type="checkbox"/>	FOREST GREEN:	<input type="checkbox"/>
BURNED ORANGE: <input type="checkbox"/>			

NOTES:

ALUMINIUM FINISH :

MILL	<input type="checkbox"/>
CLEAR ANODIZED	<input type="checkbox"/>
MEDIUM BRONZE ANODIZED	<input type="checkbox"/>
BLACK	<input type="checkbox"/>

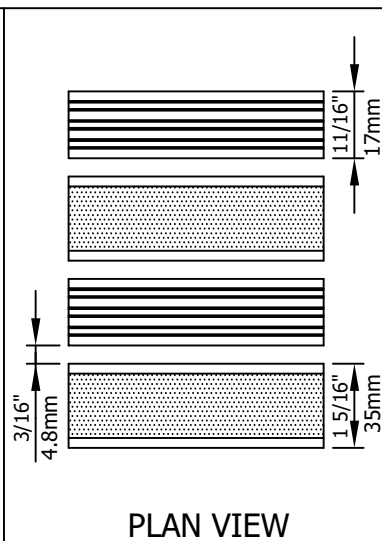
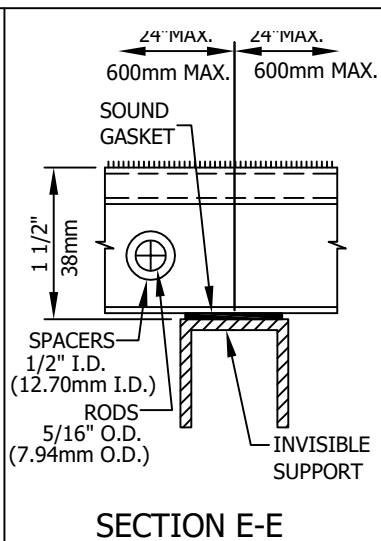
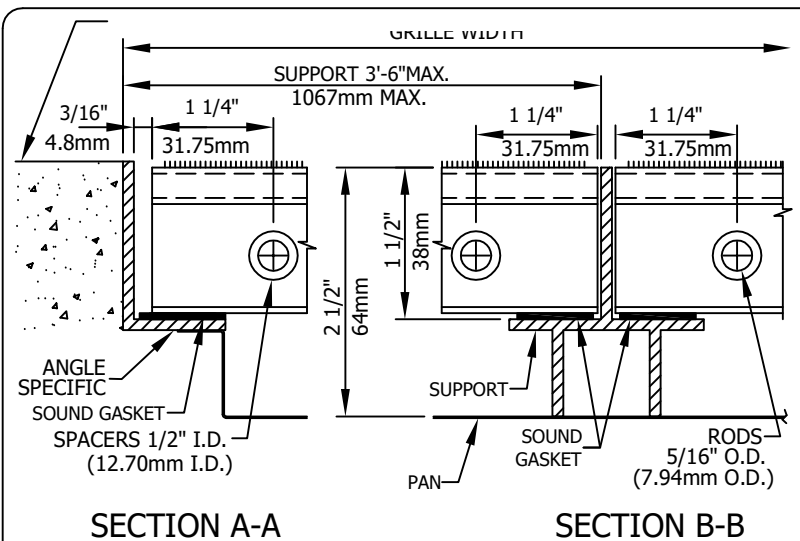
PROTECTIVE TREATMENT FOR ALUMINIUM ONLY:

PARTS IN CONTACT WITH CONCRETE WILL RECEIVE TWO COATS OF BITUMINOUS PAINT.

DRAIN:

WITH	<input type="checkbox"/>
WITHOUT	<input checked="" type="checkbox"/>

DATE:	PO Nb:
DRAWN BY:	DWG Nb:
APPROVED BY:	



REGULAR INSTALLATION

GRILLE: BCH-4

FRAME: A D

MATERIAL AND ALLOY:

6061-T6 ALUMINIUM	<input type="checkbox"/>
STAINLESS STEEL 304	<input type="checkbox"/>
STAINLESS STEEL 316	<input type="checkbox"/>

GRILLE:

ALUMINIUM	<input type="checkbox"/>
STAINLESS STEEL	<input type="checkbox"/>

FRAME:

ALUMINIUM	<input type="checkbox"/>
STAINLESS STEEL	<input type="checkbox"/>

WITHOUT PAN:

☐

WITH PAN:

GALVANIZED	<input type="checkbox"/>
STAINLESS STEEL	<input type="checkbox"/>
ALUMINIUM	<input type="checkbox"/>

GAGE:

22ga / 0.8mm

OVERALL DEPTH:

GRILLE / FRAME	PIT	2 1/2"
	PAN	

REVISION:

REVISION DATE:

CONTRACTOR:

ARCHITECTS:

DISTRIBUTOR:

BOLAR

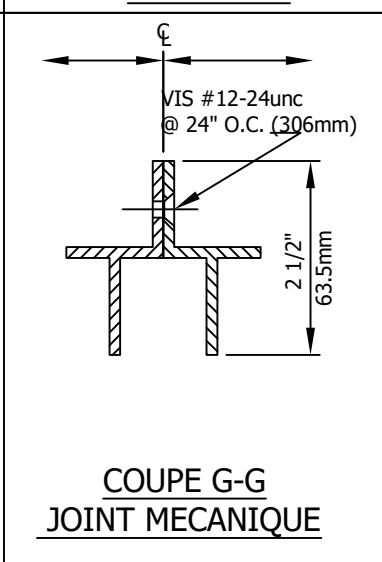
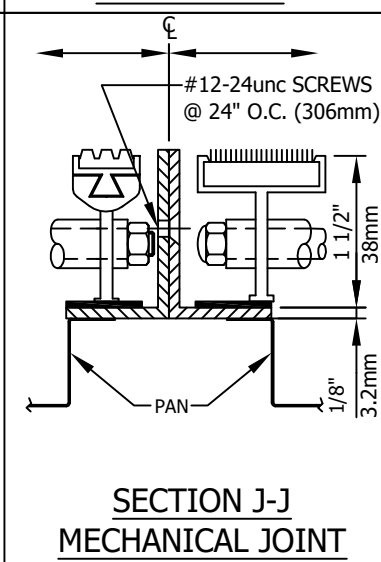
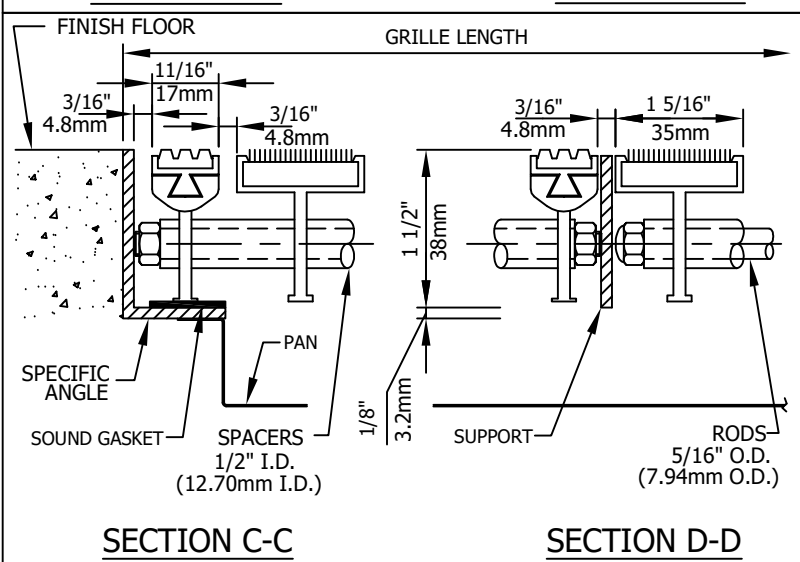
http://www.bolar.com
sales@bolar.com

BLAINVILLE, QUEBEC

TEL: (450) 435 7385
FAX: (450) 435 3600

PROJECT:

DATE:	PO Nb:
DRAWN BY:	DWG Nb:
APPROVED BY:	



OPTIONS:

#1 ☐

#2 ☐

#3 ☐

#4 ☐

#5 ☐

SEE DWG Nb:

PILELESS CARPET

COLOR:

VINYL COLOR:

BLACK:	<input type="checkbox"/>	LIGHT BLUE:	<input type="checkbox"/>
GREY:	<input type="checkbox"/>	BURGUNDY:	<input type="checkbox"/>
BROWN:	<input type="checkbox"/>	KHAKI (GREEN):	<input type="checkbox"/>
BEIGE:	<input type="checkbox"/>	FOREST GREEN:	<input type="checkbox"/>
BURNED ORANGE: <input type="checkbox"/>			

NOTES:

ALUMINIUM FINISH :

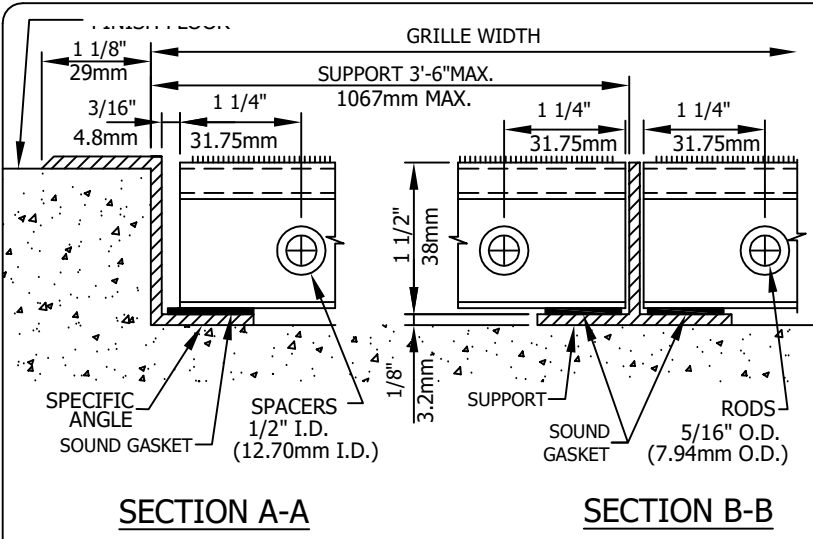
MILL	<input type="checkbox"/>
CLEAR ANODIZED	<input type="checkbox"/>
MEDIUM BRONZE ANODIZED	<input type="checkbox"/>
BLACK	<input type="checkbox"/>

PROTECTIVE TREATMENT FOR ALUMINIUM ONLY:

PARTS IN CONTACT WITH CONCRETE WILL RECEIVE TWO COATS OF BITUMINOUS PAINT.

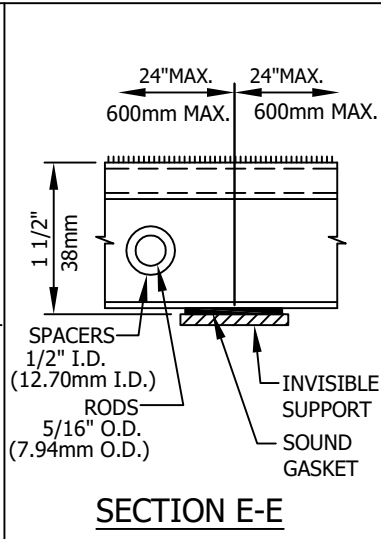
DRAIN:

WITH	<input type="checkbox"/>
WITHOUT	<input type="checkbox"/>

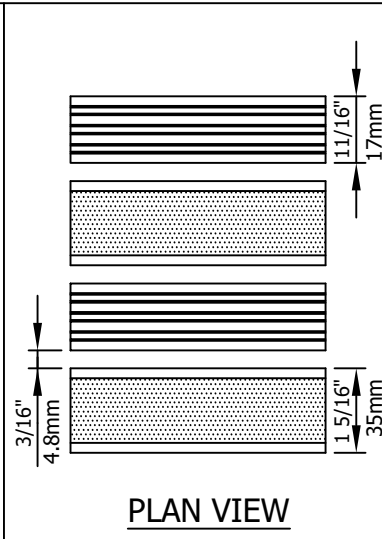


SECTION A-A

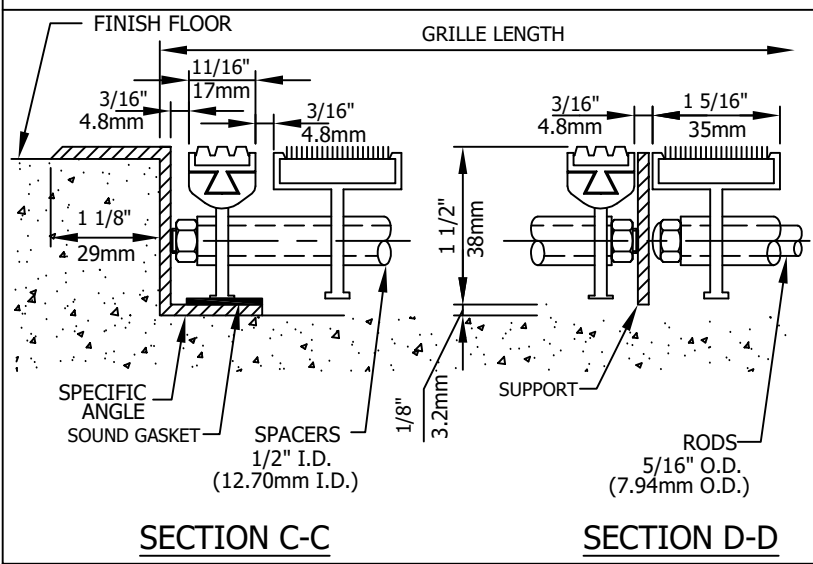
SECTION B-B



SECTION E-E

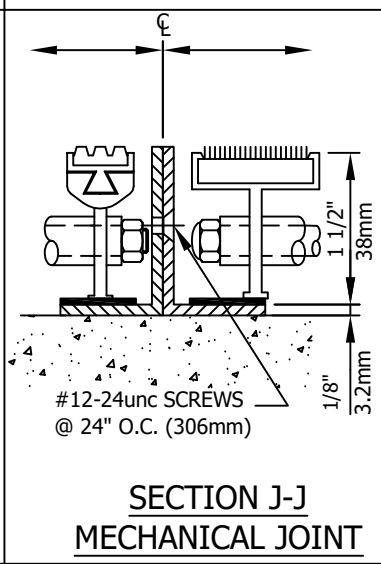


PLAN VIEW

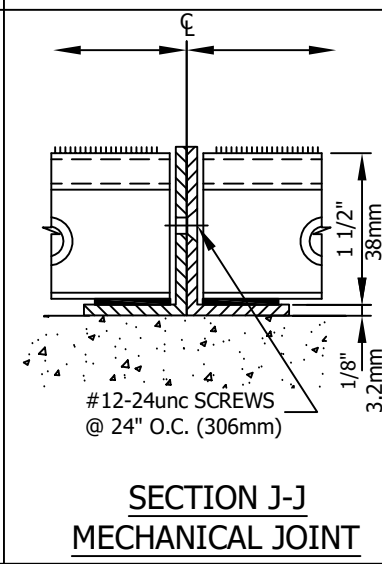


SECTION C-C

SECTION D-D



SECTION J-J
MECHANICAL JOINT



SECTION J-J
MECHANICAL JOINT

LEVEL BASE INSTALLATION	
GRILLE: BCH-4	
FRAME: T T	
MATERIAL AND ALLOY:	
6061-T6 ALUMINIUM	<input checked="" type="checkbox"/>
STAINLESS STEEL 304	<input type="checkbox"/>
STAINLESS STEEL 316	<input type="checkbox"/>
GRILLE:	
ALUMINIUM	<input checked="" type="checkbox"/>
STAINLESS STEEL	<input type="checkbox"/>
FRAME:	
ALUMINIUM	<input checked="" type="checkbox"/>
STAINLESS STEEL	<input type="checkbox"/>
WITHOUT PAN: <input checked="" type="checkbox"/>	
WITH PAN:	
GALVANIZED	<input type="checkbox"/>
STAINLESS STEEL	<input type="checkbox"/>
ALUMINIUM	<input type="checkbox"/>
GAGE: <input type="text"/>	
OVERALL DEPTH:	
GRILLE / FRAME	PIT <input type="text"/> 1 1/2
	PAN <input type="text"/>
REVISION: <input type="text"/>	
REVISION DATE: <input type="text"/>	
CONTRACTOR: <input type="text"/>	
ARCHITECTS: <input type="text"/>	
DISTRIBUTOR: <input type="text"/>	
BOLAR BLAINVILLE, QUEBEC http://www.bolar.com TEL: (450) 435 7385 sales@bolar.com FAX: (450) 435 3600	
PROJECT: <input type="text"/>	
DATE: <input type="text"/>	
DRAWN BY: <input type="text"/>	
APPROVED BY: <input type="text"/>	
PO Nb: <input type="text"/>	
DWG Nb: <input type="text"/>	

OPTION:

#1 ☐

#2 ☐

#3 ☐

#4 ☐

#5 ☐

SEE DWG Nb:

PILELESS CARPET

COLOR:

VINYL COLOR:

BLACK: <input type="checkbox"/>	LIGHT BLUE: <input type="checkbox"/>
GREY: <input type="checkbox"/>	BURGUNDY: <input type="checkbox"/>
BROWN: <input type="checkbox"/>	KHAKI (GREEN): <input type="checkbox"/>
BEIGE: <input type="checkbox"/>	FOREST GREEN: <input type="checkbox"/>
BURNED ORANGE: <input type="checkbox"/>	

NOTES:

PARTS IN CONTACT WITH CONCRETE WILL RECEIVE TWO COATS OF BITUMINOUS PAINT.

ALUMINIUM FINISH :

MILL ☒

CLEAR ANODIZED ☐

MEDIUM BRONZE ANODIZED ☐

BLACK ☐

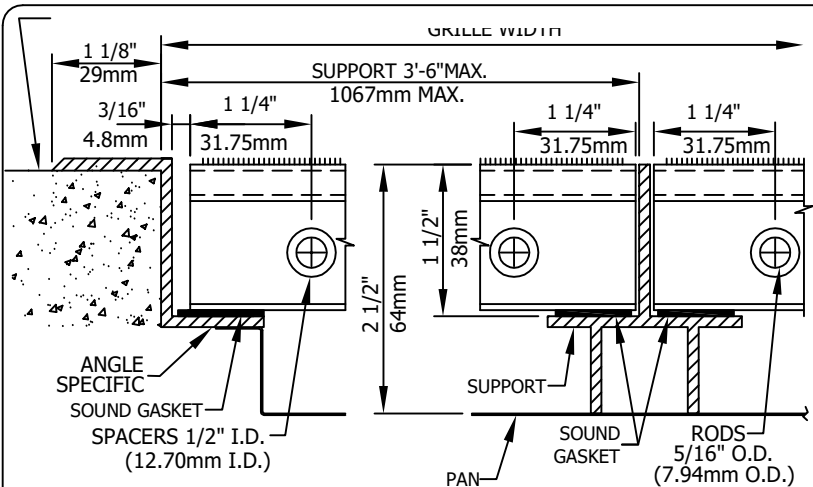
PROTECTIVE TREATMENT FOR ALUMINIUM ONLY:

PARTS IN CONTACT WITH CONCRETE WILL RECEIVE TWO COATS OF BITUMINOUS PAINT.

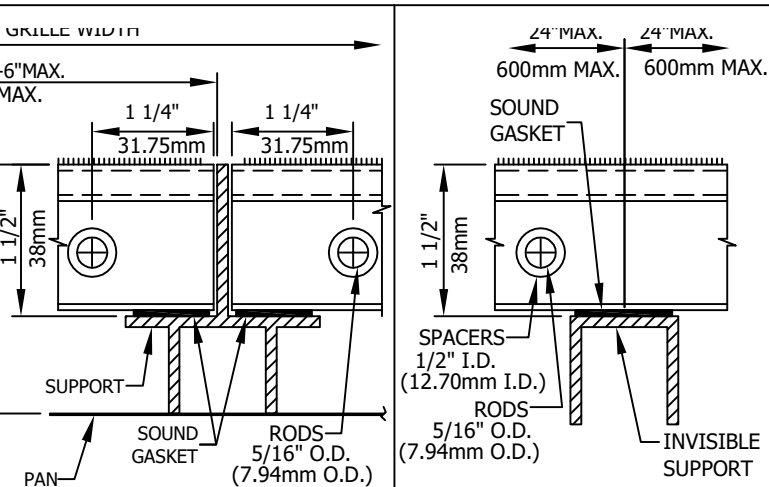
DRAIN:

WITH ☐

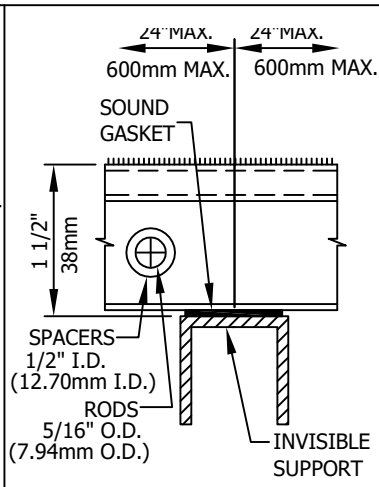
WITHOUT ☒



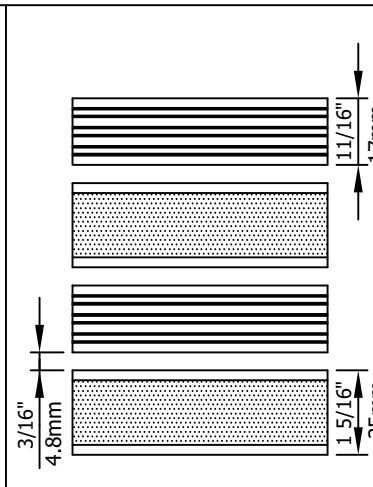
SECTION A-A



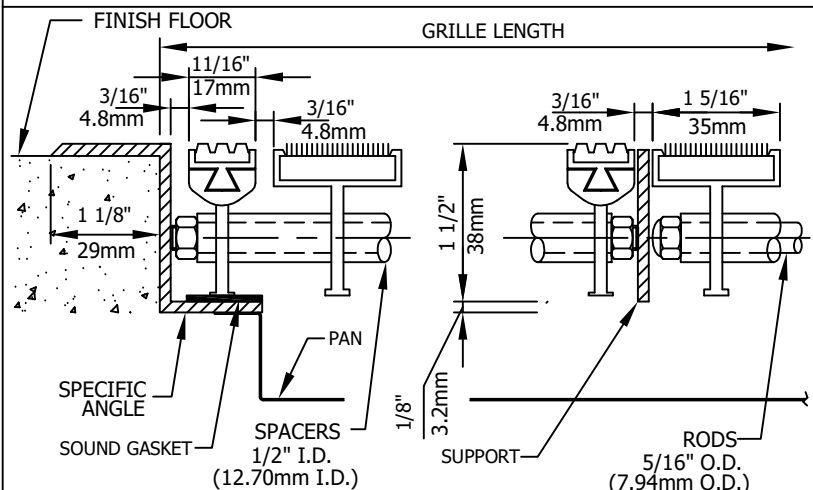
SECTION B-B



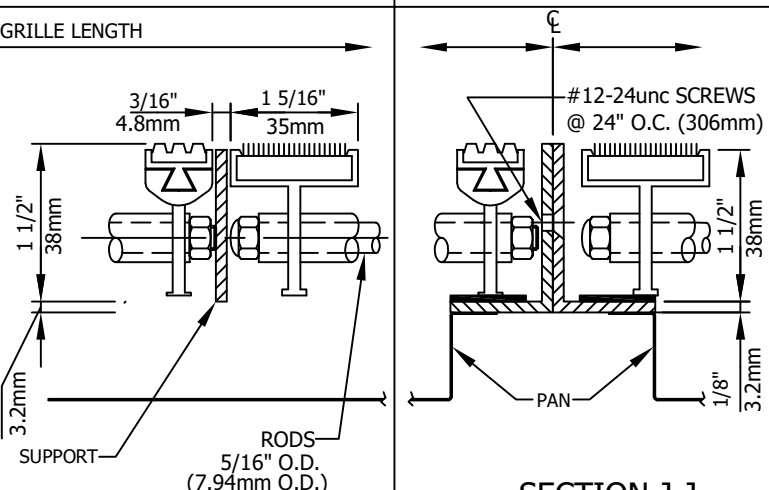
SECTION E-E



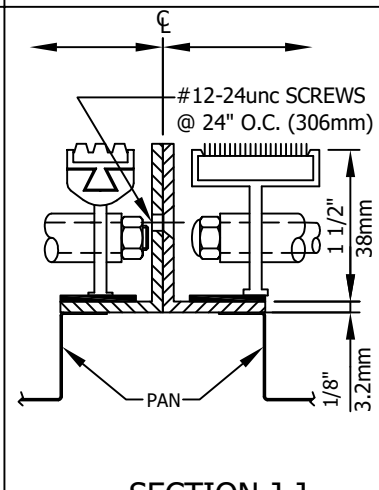
PLAN VIEW



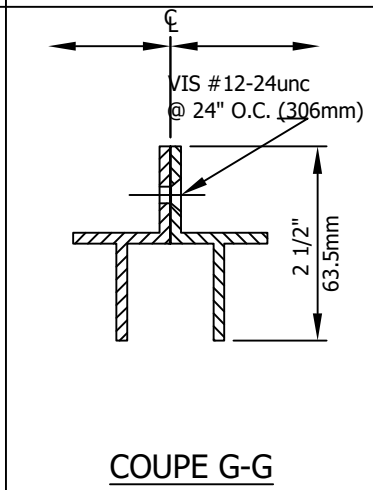
SECTION C-C



SECTION D-D



SECTION J-J
MECHANICAL JOINT



COUPE G-G
JOINT MECANIQUE

REGULAR INSTALLATION

GRILLE: BCH-4

FRAME: T T

MATERIAL AND ALLOY:

6061-T6 ALUMINIUM

☒

STAINLESS STEEL 304

☐

STAINLESS STEEL 316

☐

GRILLE:

ALUMINIUM

☒

STAINLESS STEEL

☐

FRAME:

ALUMINIUM

☒

STAINLESS STEEL

☐

WITHOUT PAN:

☐

WITH PAN:

GALVANIZED

☒

STAINLESS STEEL

☐

ALUMINIUM

☐

GAGE:

22ga / 0.8mm

OVERALL DEPTH:

GRILLE / FRAME

PIT

2 1/2"

PAN

PAN

REVISION:

☐

REVISION DATE:

☐

CONTRACTOR:

ARCHITECTS:

DISTRIBUTOR:

BOLAR

http://www.bolar.com
sales@bolar.com

BLAINVILLE, QUEBEC

TEL: (450) 435 7385

FAX: (450) 435 3600

PROJECT:

DATE:

DRAWN BY:

APPROVED BY:

PO Nb:

DWG Nb:

OPTIONS:

- #1 ☐
- #2 ☐
- #3 ☐
- #4 ☐
- #5 ☐

SEE DWG Nb:

PILELESS CARPET

COLOR:

VINYL COLOR:

BLACK: ☐ LIGHT BLUE: ☐

GREY: ☐ BURGUNDY: ☐

BROWN: ☐ KHAKI (GREEN): ☐

BEIGE: ☐ FOREST GREEN: ☐

BURNED ORANGE: ☐

NOTES:

PROTECTIVE TREATMENT FOR ALUMINIUM ONLY:

PARTS IN CONTACT WITH CONCRETE WILL RECEIVE
TWO COATS OF BITUMINOUS PAINT.

DRAIN:

WITH

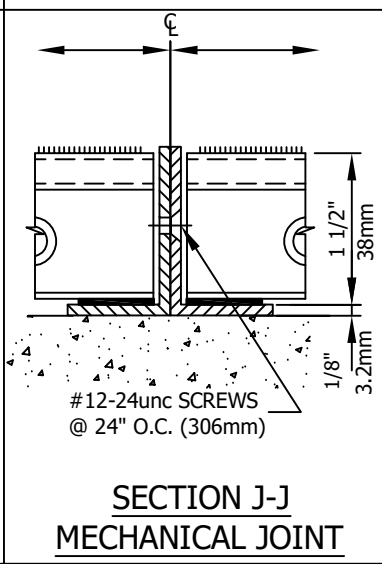
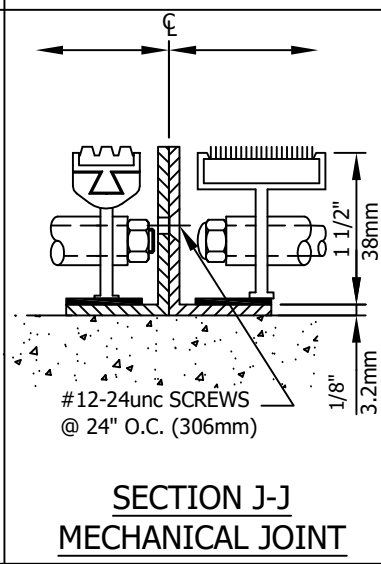
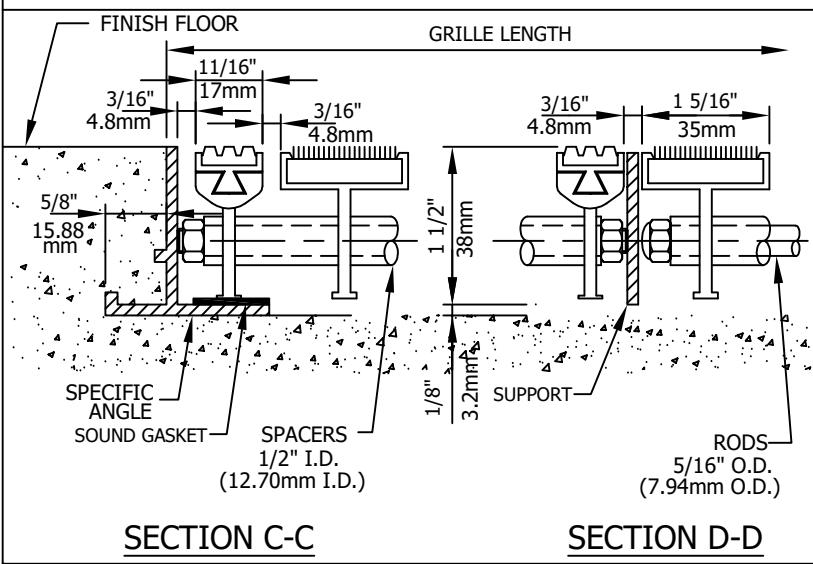
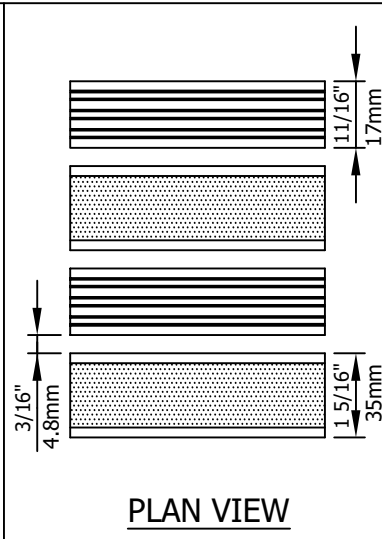
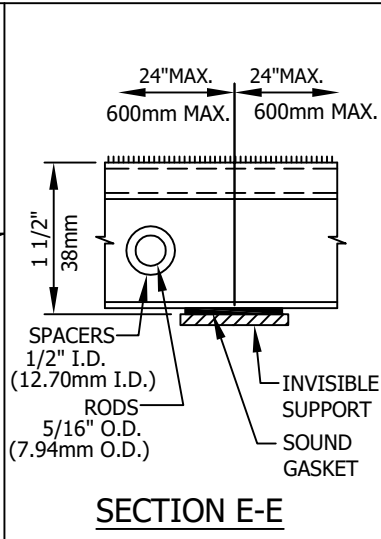
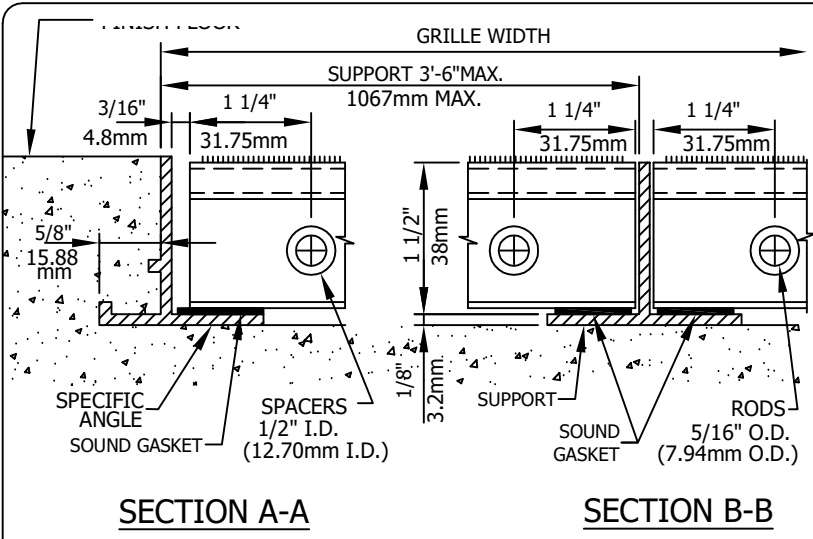
☐

WITHOUT

☒

ALUMINIUM FINISH :

- MILL ☒
- CLEAR ANODIZED ☐
- MEDIUM BRONZE ANODIZED ☐
- BLACK ☐



LEVEL BASE INSTALLATION

GRILLE: BCH-4

FRAME: V V

MATERIAL AND ALLOY:

6061-T6 ALUMINIUM	<input checked="" type="checkbox"/>
STAINLESS STEEL 304	<input type="checkbox"/>
STAINLESS STEEL 316	<input type="checkbox"/>

GRILLE:

ALUMINIUM	<input checked="" type="checkbox"/>
STAINLESS STEEL	<input type="checkbox"/>

FRAME:

ALUMINIUM	<input checked="" type="checkbox"/>
STAINLESS STEEL	<input type="checkbox"/>

WITHOUT PAN: ☒

WITH PAN:

GALVANIZED	<input type="checkbox"/>
STAINLESS STEEL	<input type="checkbox"/>
ALUMINIUM	<input type="checkbox"/>

GAGE:

OVERALL DEPTH:

GRILLE / FRAME	PIT	<input type="text" value="1 5/8\"/>
	PAN	<input type="text"/>

REVISION:

REVISION DATE:

CONTRACTOR:

ARCHITECTS:

DISTRIBUTOR:

BOLAR BLAINVILLE, QUEBEC

http://www.bolar.com TEL: (450) 435 7385

sales@bolar.com FAX: (450) 435 3600

PROJECT:

DATE:	PO Nb:
DRAWN BY:	DWG Nb:
APPROVED BY:	

OPTION:

#1	<input type="checkbox"/>
#2	<input type="checkbox"/>
#3	<input type="checkbox"/>
#4	<input type="checkbox"/>
#5	<input type="checkbox"/>

SEE DWG Nb:

PILELESS CARPET

COLOR:

VINYL COLOR:

BLACK:	<input type="checkbox"/>	LIGHT BLUE:	<input type="checkbox"/>
GREY:	<input type="checkbox"/>	BURGUNDY:	<input type="checkbox"/>
BROWN:	<input type="checkbox"/>	KHAKI (GREEN):	<input type="checkbox"/>
BEIGE:	<input type="checkbox"/>	FOREST GREEN:	<input type="checkbox"/>
BURNED ORANGE: <input type="checkbox"/>			

NOTES:

#12-24unc SCREWS @ 24" O.C. (306mm)

ALUMINIUM FINISH :

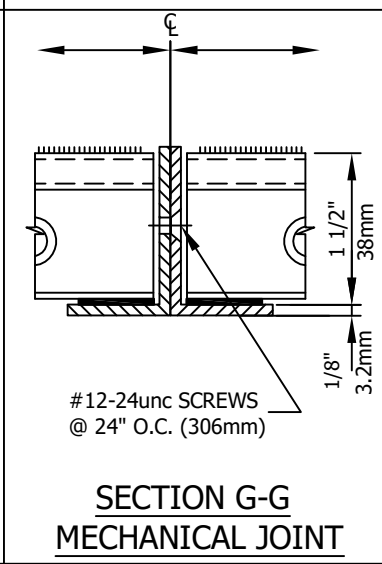
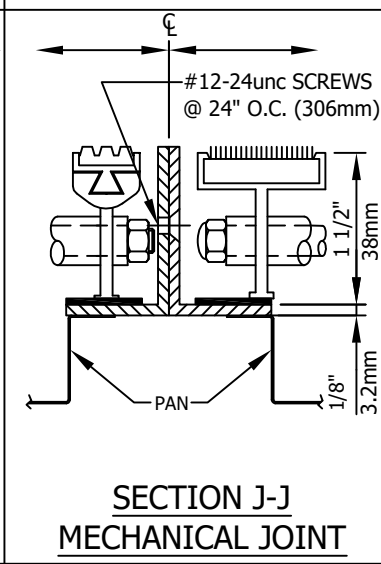
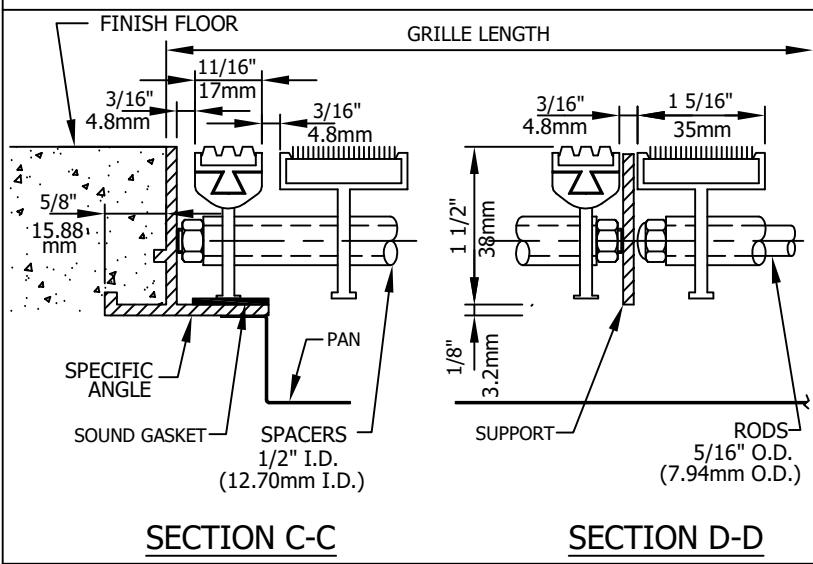
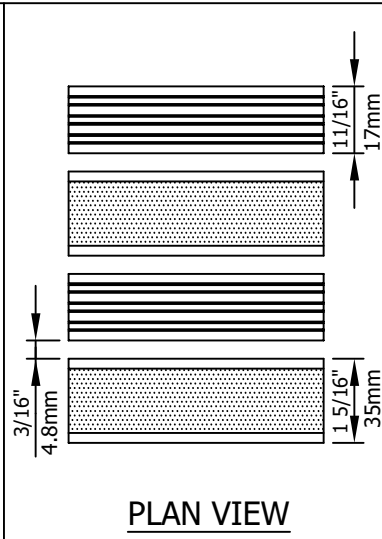
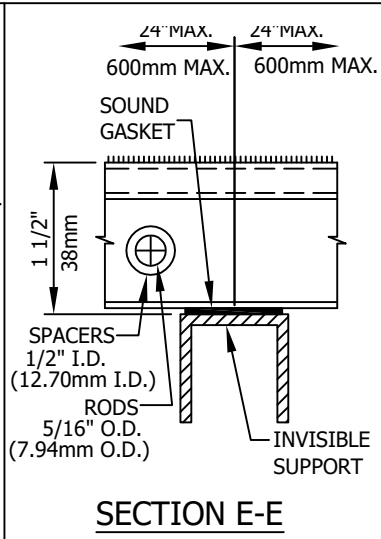
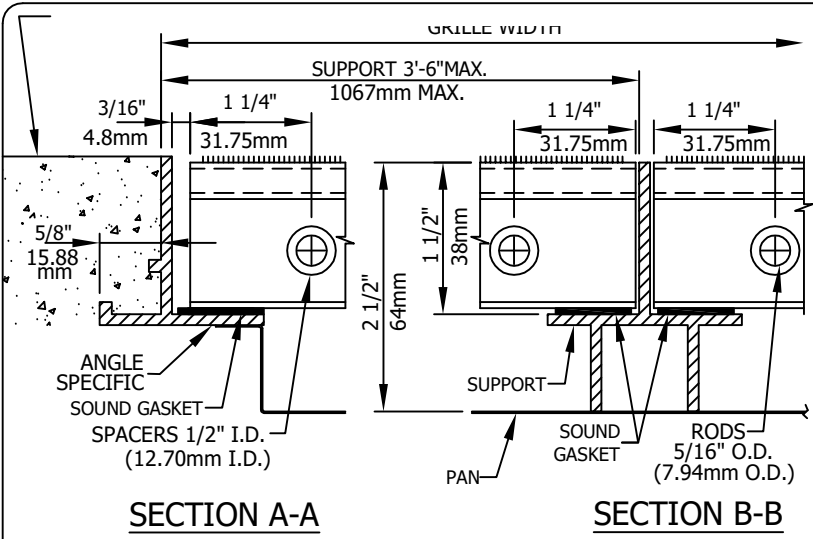
MILL	<input checked="" type="checkbox"/>
CLEAR ANODIZED	<input type="checkbox"/>
MEDIUM BRONZE ANODIZED	<input type="checkbox"/>
BLACK	<input type="checkbox"/>

PROTECTIVE TREATMENT FOR ALUMINIUM ONLY:

PARTS IN CONTACT WITH CONCRETE WILL RECEIVE TWO COATS OF BITUMINOUS PAINT.

DRAIN:

WITH	<input type="checkbox"/>
WITHOUT	<input checked="" type="checkbox"/>



REGULAR INSTALLATION	
GRILLE: BCH-4	
FRAME: V V	
MATERIAL AND ALLOY:	
6061-T6 ALUMINIUM	<input checked="" type="checkbox"/>
STAINLESS STEEL 304	<input type="checkbox"/>
STAINLESS STEEL 316	<input type="checkbox"/>
GRILLE:	
ALUMINIUM	<input checked="" type="checkbox"/>
STAINLESS STEEL	<input type="checkbox"/>
FRAME:	
ALUMINIUM	<input checked="" type="checkbox"/>
STAINLESS STEEL	<input type="checkbox"/>
WITHOUT PAN: <input type="checkbox"/>	
WITH PAN:	
GALVANIZED	<input checked="" type="checkbox"/>
STAINLESS STEEL	<input type="checkbox"/>
ALUMINIUM	<input type="checkbox"/>
GAGE: <input type="text" value="22ga / 0.8mm"/>	
OVERALL DEPTH:	
GRILLE / FRAME	<input type="text" value="2 1/2"/>
PIT	<input type="text"/>
PAN	<input type="text"/>
REVISION: <input type="text"/>	
REVISION DATE: <input type="text"/>	
CONTRACTOR: <input type="text"/>	
ARCHITECTS: <input type="text"/>	
DISTRIBUTOR: <input type="text"/>	
BOLAR BLAINVILLE, QUEBEC http://www.bolar.com TEL: (450) 435 7385 sales@bolar.com FAX: (450) 435 3600	
PROJECT: <input type="text"/>	
DATE: <input type="text"/>	
DRAWN BY: <input type="text"/>	
APPROVED BY: <input type="text"/>	
PO Nb: <input type="text"/>	
DWG Nb: <input type="text"/>	

OPTIONS:

#1 ☐

#2 ☐

#3 ☐

#4 ☐

#5 ☐

SEE DWG Nb:

PILELESS CARPET

COLOR:

VINYL COLOR:

BLACK: <input type="checkbox"/>	LIGHT BLUE: <input type="checkbox"/>
GREY: <input type="checkbox"/>	BURGUNDY: <input type="checkbox"/>
BROWN: <input type="checkbox"/>	KHAKI (GREEN): <input type="checkbox"/>
BEIGE: <input type="checkbox"/>	FOREST GREEN: <input type="checkbox"/>
BURNED ORANGE: <input type="checkbox"/>	

NOTES:

PARTS IN CONTACT WITH CONCRETE WILL RECEIVE TWO COATS OF BITUMINOUS PAINT.

ALUMINIUM FINISH :

MILL ☒

CLEAR ANODIZED ☐

MEDIUM BRONZE ANODIZED ☐

BLACK ☐

PROTECTIVE TREATMENT FOR ALUMINIUM ONLY:

PARTS IN CONTACT WITH CONCRETE WILL RECEIVE TWO COATS OF BITUMINOUS PAINT.

DRAIN:

WITH ☐

WITHOUT ☒